



Fact Sheet: Joint Development Authority Industrial Park -Building Specifications-

A publication of the Telfair County Chamber of Commerce



View of Buildings 3&4 from GA Hwy 117



View of Buildings 1&2 from GA Hwy 117

Building Specifications

Buildings 1 & 3

100' x 80'

16' Eaves

24' 5" Roof Peak

12' x 14' Rollup Doors

Buildings 2 & 4

100' x 100'

16' Eaves

24' 5" Roof Peak

12' x 14' Rollup Doors

Flooring:
Incomplete in all buildings



View of Buildings from GA Hwy 117

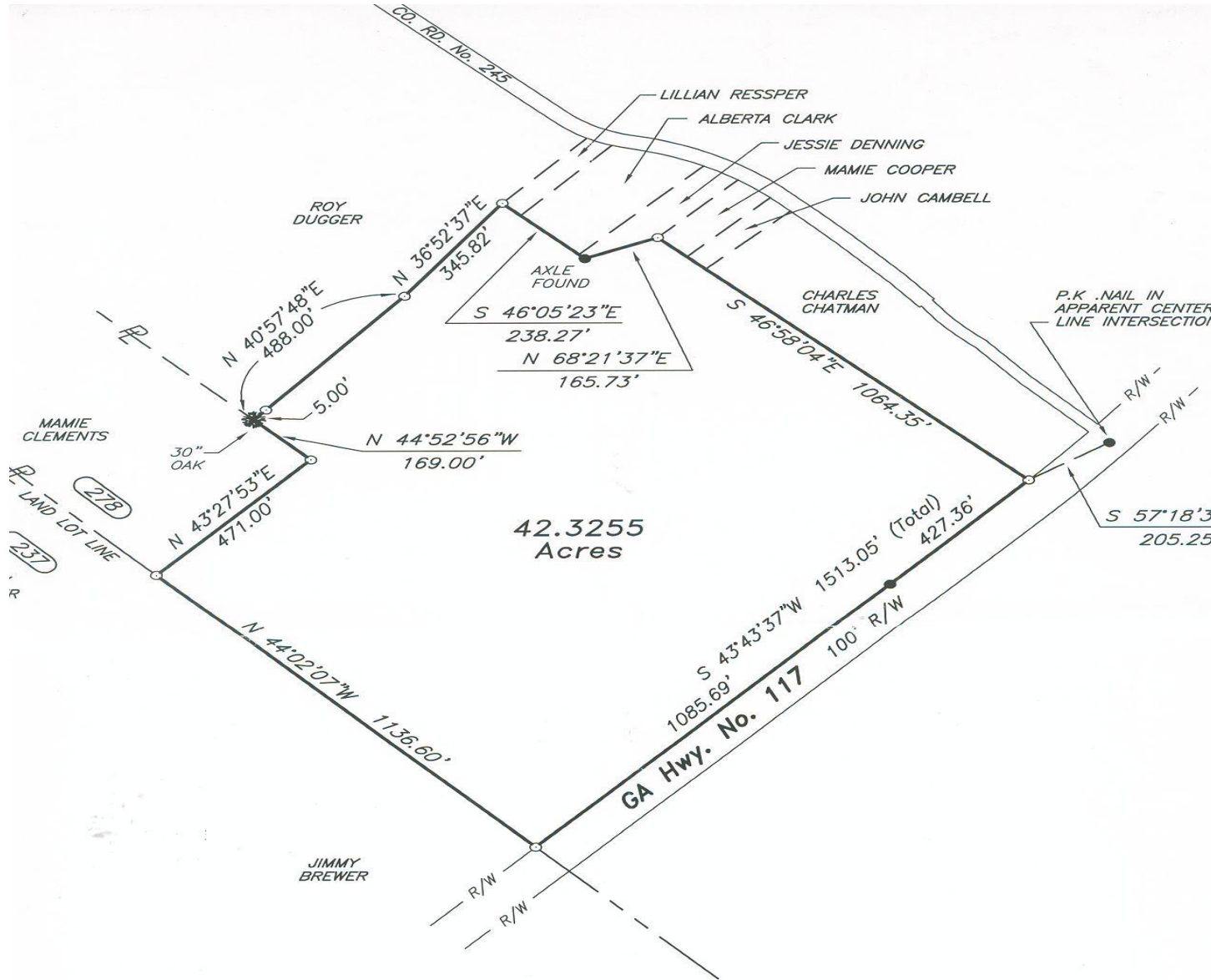


View of Property & Buildings from GA Hwy 117



Fact Sheet: Joint Development Authority Industrial Park -Plat-

A publication of the Telfair County Chamber of Commerce



SURVEYOR'S NOTES

- 1: In my opinion, this plat of survey did not require approval pursuant to O.C.G.A. Section 15-06-67 (a)
- 2: Any certification expressed or implied herein applies only to the individual(s), association(s), agency(s), and/or corporation(s) explicitly listed.
- 3: Any certification expressed or implied herein is invalid without the official, embossed seal impression

Telfair County Chamber of Commerce & Telfair Development Authority

9 East Oak Street * McRae, Georgia 31055

Office (229) 868-6365 * Cell (229) 860-0203 * Fax (229) 868-7970 * Email rogers@telfairco.org

www.telfairco.org



Fact Sheet: Joint Development Authority Industrial Park -Aerial Base Map-

A publication of the Telfair County Chamber of Commerce





Fact Sheet: Joint Development Authority Industrial Park -Transportation-

A publication of the Telfair County Chamber of Commerce

Transportation

Highway Access

- Site is located along GA117
- Site is 72 miles from Interstate 75-Cordele via GA117/US 280;
- Site is 69 miles from Interstate 75-Tifton via GA 117;
- Site is 77 miles from Interstate 75-Perry via US 341;
- Site is 98 miles from Interstate 75-Macon via US341/US 441/Interstate 16;
- Site is 94 miles from Interstate 95-Brunswick via US 341;
- Site is 155 miles from Interstate 95-Savannah via US 341/I95;
- Site is 51 miles from Interstate 16 via US 341/US 441.



Railroad Access

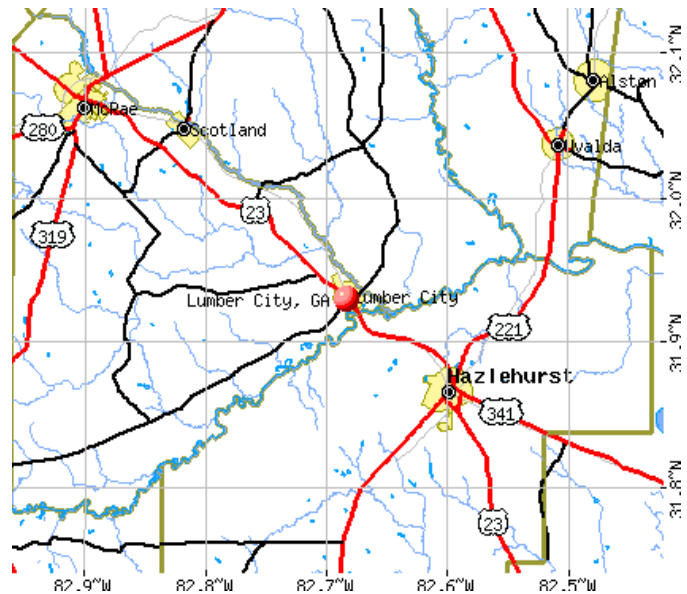
- Norfolk Southern Railroad is located 1 mile from site;

Airport Access

- Telfair-Wheeler Airport
20 miles from site via US 341/US 441
5,001 Ft. Runway

Waterways

- Port of Savannah 160 miles from site
- Port of Brunswick 106 miles from site
- Barge Facility 106 miles from site
- Brunswick Docks



Telfair County Chamber of Commerce & Telfair Development Authority

9 East Oak Street * McRae, Georgia 31055

Office (229) 868-6365 * Cell (229) 860-0203 * Fax (229) 868-7970 * Email rogers@telfairco.org

www.telfairco.org



Fact Sheet: Joint Development Authority Industrial Park -Utilities & Site Characteristics-

A publication of the Telfair County Chamber of Commerce

Site Characteristics

Total Acreage	42 acres
Expansion Potential	Yes
Site Configuration	Rectangular
Present Zoning	Agricultural-located adjacent to Joint Industrial Park
Land Use Constraints	Close proximity to industrial & commercial properties
Ownership	One owner
Map & Parcel	Map 99 – Parcel 29

Environmental

Probable Wetland Area	22.3 acres
Flood Plain Acres	None
Hydric Soils	37.7 acres
Likely Usable Acres	82 acres

Transportation

Highway Accessibility	Direct Access to GA 117 US 341, 1 mile East
Interstate Highway Accessibility	None at site
Rail Accessibility	None at site
Airport	
Special Modes of Transportation	

Services

Water Lines	6" line at site (Lumber City)
Sewer Lines	Adjacent to site
Natural Gas	n/a