

Telfair County, GA

This brochure is a publication of:

Telfair County Chamber of Commerce

9 East Oak Street

McRae, GA 31055

Office: (229) 868-6365

Email: rogers@telfairco.org

Web: www.telfairco.org

Facebook:

www.facebook.com/TelfairCountyGA

*Arrive and then Revive
As You
Sit Back and Relax*



Helena * Jacksonville * Lumber City * McRae * Milan * Scotland

Telfair County is located in south central Georgia, 154 miles southeast of Atlanta and 70 miles south of Macon.

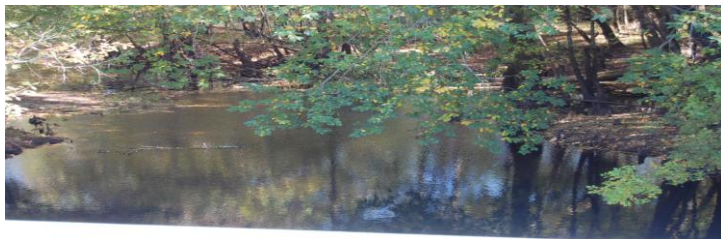
Telfair County has four beautiful seasons with an average year-round temperature of 65 °F. Winters are mild with an average high of 55°F, while summers are warm with an average high of 93°F and low of 75°F. Spring and autumn are transitional with temperatures leaning to the warm side.

Telfair enjoys mild temperatures year-round due to the proximity to the warm water of the Gulf of Mexico. Rainfall averages 50 inches annually, providing lush foliage.

Telfair’s relatively mild climate throughout the year affords unlimited opportunities for recreation. Telfair’s creeks and rivers provide bountiful fishing and water activities. Hunters delight in the dove, quail, wild turkey, duck, deer and small game that abound in the area.

The county and state rural roads deliver a panoramic view of the countryside for those exploring on bicycle or motorcycles. Beautiful scenic drives offer rolling hills, timbered land and open farmland. In the summer the sweet fragrance of honeysuckle adds to a delightful evening ride.

As with many small towns, church activities are an important way of life. Most denominations are represented in the county.



Community Phone Numbers

Emergencies Dial 911

Non-Emergency Numbers:

Sheriff's Office	(229) 868-6621
Jail	(229) 868-6611
Helena Police Department	(229) 868-6222
Lumber City Police Department	(912) 363-0555
McRae Police Department	(229) 868-2093
Milan Police Department	(229) 362-4271
Georgia State Patrol	(229) 868-3074
351 Eighth St. Helena, GA 31037	
Department of Driver Services	(678) 413-8400
351 Eighth St. Helena, GA 31037	

Community Service Center	(229) 868-5966
Cooperative Extension Service	(229) 868-6489
Public Library	(229) 868-2978
101 College St. McRae, GA 31055 www.orls.org/telfair	
Department of Family and Children Services	(229) 868-3030
Health Department	(229) 868-7404
Department of Labor	
5016 Park Way Eastman, GA 31023-6152 www.dol.state.ga.us	
Social Security Administration	(888) 655-6438
919 Hillcrest Pkwy Dublin GA 31021 www.ssa.gov	
Veterans Service Center	(229) 868-6391
Georgia Power	(888) 660-5890
181 E. Oak St. McRae, GA 31055 www.georgiapower.com	
Little Ocmulgee EMC	(229) 868-7895
McRae Office 193 E. Oak St. McRae, GA 31055 www.littleocmulgeemc.com	
AT&T	(877) 757-6500
www.att.com	
Windstream	(866) 445-5880
www.windstream.com	
Georgia Natural Gas	(877) 213-1053
www.gasgeorgia.com	
Amerigas	(229) 868-2721
182 E. Willow Creek Lane McRae, GA 31055 www.amerigas.com	

Development Authorities

Development Authority of Telfair County

9 East Oak St.
McRae, GA 31055
Phone: (229) 868-6365
Email: rogers@telfairco.org

Joint Development Authority of Hazlehurst, Lumber City and Telfair County

P.O. Box 21
Lumber City, GA 31549
Phone: (229) 868-6365
Email: rogers@telfairco.org

City of Milan Development Authority

P.O. Box 87
Milan, GA 31060
Phone: (229) 362-4290

Airport Authority

Telfair-Wheeler Airport Authority

Contact: Debbie Bullard
P.O. Box 150
Alamo, Georgia 30411
Phone: (912) 568-7171

Quality of Life is a feeling inherent to life in Telfair. Feelings of quality educational opportunities for our children, quality of social life for everyone, quality of workforce and workplace, quality of enjoying living with a sense of warmth and belonging...these are but a glimpse of qualities that shine forth in Telfair.

Telfair County prides itself in providing all the things anyone could dream of with its wealth of vast and various resources. The county is approximately 440 square miles with flowing rivers bordering over half the boundary. A pleasant mixture of gently rolling hills dotted with our number one natural product.. pine trees.. and accented with creeks and swampland presents a livable rural setting which offers hunting and fishing.

The population is around 16,500, spreading over six cities and several unincorporated communities. The county seat is McRae, which has a population around 5,700.

The county is poised for planned growth with most cities having upgraded their infrastructure to accommodate the planned expansion.

Quality of Feeling Safe and Secure

Feeling Safe and Secure for your family is important to Telfair. Telfair has 24-hour security offered for residents and visitors within the county with county sheriff deputies, city police officers and a state patrol post.



McRae Fire & Police Department



Telfair County Sheriff's Office

Educational Systems

Public School System

Board of Education

P.O. Box 240
212 W. Huckabee St.
McRae, GA 31055
Phone: (229) 868-5661
www.telfairschools.org

High School

458 S. Third Ave.
McRae, GA 31055
Phone: (229) 868-6096

Middle School

3 W. Hwy 280
McRae, GA 31055
Phone: (229) 868-7465

Elementary School

532 E. Oak St
McRae, GA 31055
Phone: (229) 868-7843

Pre-K

212 W. Huckabee St.
McRae, GA 31055

Headstart Programs

Helena Headstart

P.O. Box 216
McRae, GA 31055
Phone: (229) 868-6234

Technical Colleges

Oconee Fall Line Technical College

South Campus
560 Pinehill Road
Dublin, GA 31021
Phone: (800) 200-4484
Phone: (478) 275-6589
www.oftc.edu

Little Ocmulgee Instructional Center

140 N. Third Ave.
Helena, GA 31037
Phone: (229) 868-7834
www.oftc.edu

Local Government

County

Telfair County Board of Commissioners

91 Telfair Ave.; Suite B
McRae, GA 3105
Phone (229) 868-5688

Clerk of Probate Court

19 E. Oak St.; Suite A
McRae, GA 31055
Phone: (229) 868-6038

Clerk of Superior Court

19 E. Oak St.; Suite C
McRae, GA 31055
Phone: (229) 868-6525

Tax Commissioner

91 Telfair Ave.
McRae, GA 31055
Phone: (229) 868-6545

Landfill

98 Landfill Lane
McRae, GA 31055
Phone: (229) 833-4620

Magistrate Court

19 E. Oak S
McRae, GA 31055
Phone: (229) 868-6772

Tax Appraiser

16 S. Second Ave.
McRae, GA 31055
Phone (229) 868-2896

Registrar

91 Telfair Ave.
McRae, GA 31055
Phone: (229) 868-2023

Leisure Services

408 E. Oak St.
McRae, GA 31055
Phone: (229) 315-6241

Municipal

City of Helena

7 S. Forsyth St.
P.O. Box 369
Helena, GA 31037
Phone: (229) 868-6711
www.mcraega.org

City of Lumber City

33 Main St.
P.O. Box 489
Lumber City, GA 31549
Phone: (912) 363-4942

City of Milan

2 Mt. Zion St.
P.O. Box 87
Milan, GA 31060
Phone: (229) 362-4290

City of Jacksonville

P.O. Box 7
Jacksonville, GA 31544
Phone: (229) 833-6711

City of McRae

25 S. First Ave.
P.O. Box 157
McRae, GA 31055
Phone: (229) 868-6051
www.mcraega.org

City of Scotland

P.O. Box 197
Scotland, GA 31083
Phone: (229) 868-2315

Certified Camera Ready County

Telfair County is a

Georgia Camera Ready Certified Community.

Georgia's Camera Ready Communities program connects film and TV productions with skilled county liaisons all over the state to provide local expertise and support.

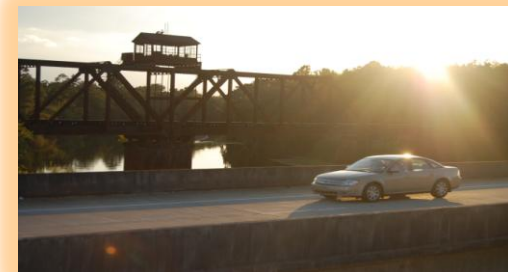


Press Release 2013:

In May of 2012, Paula Rogers, with The Telfair County Chamber of Commerce, was contacted by a location/scout manager about filming a scene for an upcoming movie in Lumber City and Wheeler County, GA. The name of the movie was to be "Identity Thief". Paula was asked to be the local coordinator for the filming in these areas. The location manager stated it was not a guarantee that any of these scenes would be used in the movie.

On July 10, 2012, the film crew was on site filming scenes on the Lumber City Bridge with the train trestle in the background and on Hwy 19 from Lumber City to Glenwood.

The movie "Identity Thief" was released February 2013 and the Lumber City Bridge and Train Trestle were used in this movie.



Telfair County

- 35th county formed in Georgia
- Created in 1807
- Named for Governor Edward Telfair
- Primarily settled by Scottish Presbyterians from the Carolinas
- 48th largest county in the State
- 444.1 squares miles of land
- Population: 16,500
- Six incorporated cities: Helena, Jacksonville, Lumber City, McRae, Milan, Scotland
- Home of the World Record Largemouth Bass caught in 1932 by George Perry at Montgomery Lake (Horse Creek WMA)
- Home of State Record Non-Typical Deer shot by Billy Joe Padgett on Thanksgiving Day 1998
- 2013 Millage Rates: Total: 29.391

State:	0.150
County:	13.949
School:	15.394
- ISO Rating: 9
- Average Climate

January	53°	13.10" Rainfall
April	73°	12.22" Rainfall
July	80°	14.02" Rainfall
October	57°	07.03" Rainfall

Local Points of Contact

U.S. Legislatures

Senator Saxby Chambliss

Middle Georgia Office
300 Mulberry St.
Suite 502
Macon, GA 31201
(478) 741-1417
www.senate.gov

Senator Johnny Isakson

One Overton Park; Suite 970
3625 Cumberland Blvd.
Atlanta, GA 30339
(770) 661-0999
www.senate.gov

Congressman Austin Scott

Capital Office
516 Cannon HOB
Washington, DC 20515
(202) 225-6531

District Office
157-B N. Central Ave.
Tifton, GA 31794
(229) 396-5174

Georgia Legislatures

Senator Tommy Williams

Capitol Office
321 State Capital
Atlanta, GA 30334
(404) 656-0089

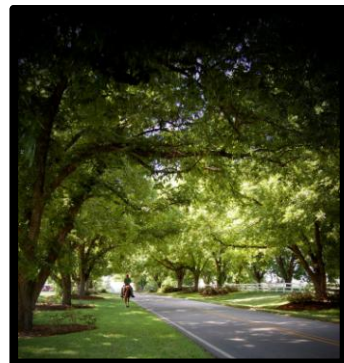
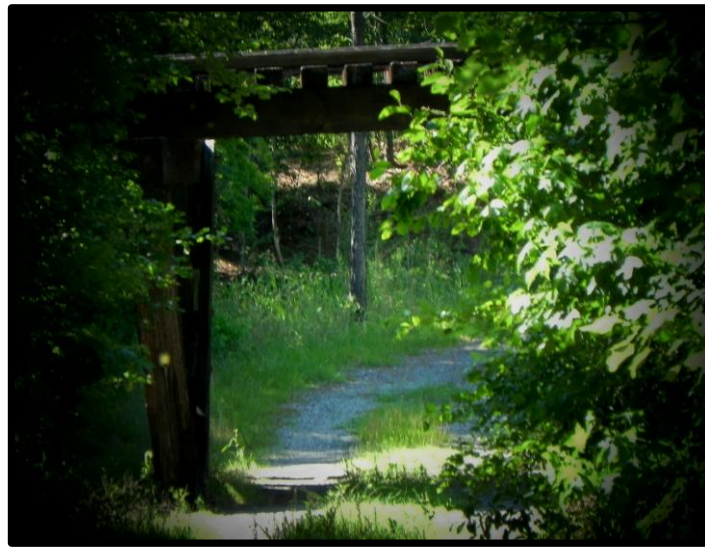
District Office
148 Williams Ave.
Lyons, GA 30435
(912) 526-7444

Representative Jimmy Pruet

Capitol Office
507 Coverdell Legislative Office
Bldg.
Atlanta, GA 30334
(404) 656-0202

District Office
P.O. Box 459
Eastman, GA 31023
(478) 374-4316

Country-Side Views



City of McRae

- Incorporated March 3, 1874
- Named after Daniel Murphy McRae a Scotsman, who is known for aiding in Telfair's County seat being moved from Jacksonville to McRae
- 3.4 square miles of land
- Population 5,740
- Known as the Crossroad City due to the fact that five major highways cross in McRae:



- Has a replica of the Statue of Liberty one twelfth the size of the original.



City of McRae

■ 2013 McRae listed as one of the 50 Safest Cities in Georgia by The SafeWise Report

McRae is one of the smallest towns on the SafeWise Report, with a population of just over 5,600 people. The city connects both Atlanta and the Atlantic Coast by way of about two and a half hours, making it close enough to the city and beach to enjoy them while still preserving the quaint, community feel of a tight-knit town.

Its small town vibe is reflected in its distinct local culture and low crime rate. With only one robbery and two motor vehicle thefts reported in 2012. McRae allows you to feel safe about maintaining your personal belongings. If you're looking for a cultural center within the city limits, you can visit the Telfair Center for the Arts, which is a rehabilitation of the Old South Georgia College. (www.safewise.com/blog/50-safest-cities-georgia)

- 2013 Millage Rate 9.895
- ISO Rating 5



Festivals & Events



City of Helena

- Incorporated in 1890.
- Once called “Junction City” because of its Seaboard Railroad running east and west crossing the Norfolk Southern rail line running north and south.
- One prosperous concern that began in Helena was the Coca Cola Bottling Company owned by Mr. H.L. Thaxton.
- In years past, there were timber and turpentine related businesses
- 2.1 square miles of land
- Population 2,883
- 2013 Millage Rate 8.000
- ISO Rating 9



Helena Walking Tract

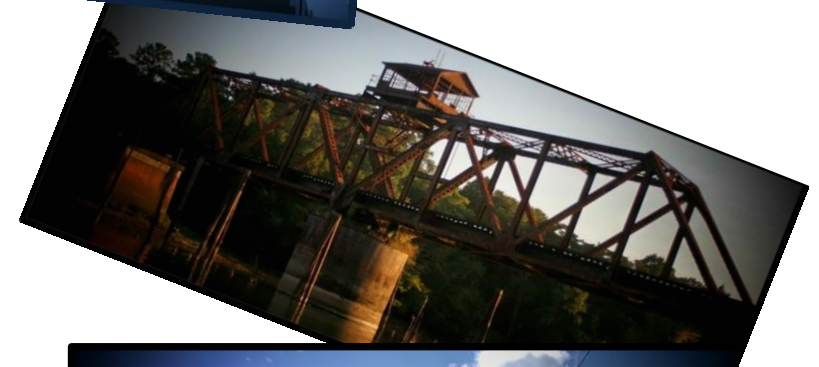
City of Jacksonville

- First county seat of government for Telfair County
- Named for General Andrew Jackson
- Between 1807 and 1812, court was held in various homes
- 1812 a courthouse was erected on the site of the present Methodist Church
- Important part of the Blackshear Trail which followed the Altamaha and Ocmulgee Rivers from Darien to Fort Hawkins
- Was the center of a large and wealthy plantation economy and was a landing for freight and passenger traffic on the river some years before and after the War between the States
- 1.1 square miles of land
- Population 140
- 2013 Millage Rate 0.000
- ISO Rating 9



Ocmulgee River

Points of Interest



Historic Trails

■ **Historical Homes Walking Tour of McRae**

This tour of homes is an easy, self-guided tour of more than 30 of McRae's homes and churches of the New South era.



Telfair Driving Trail

This tour is a driving tour through Telfair County highlighting historic sites and structures of the county.

A printed tour guide book can be obtained from the Pioneer Arts & Historical Society at (229) 868-7114.

Sugar Creek Plantation,

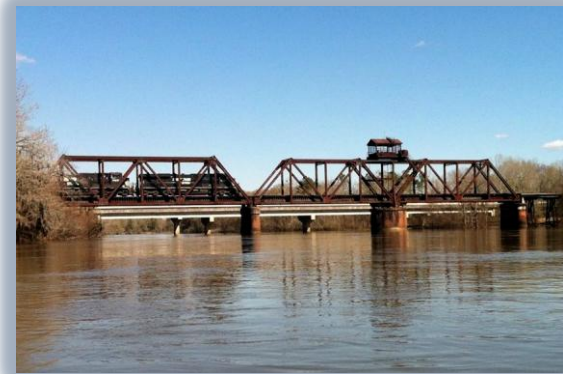
also known as the Talmadge House, is the former home of two Georgia Governors: Eugene Talmadge & Herman Talmadge.



This historic home is located just south of McRae, GA on US Hwy 341.

City of Lumber City

- Incorporated in Bill No 255 of the Acts of the General Assembly (90th Session) and approved on September 3, 1889
- In the 1800's, Lumber City was a thriving town due to the tremendous amount of lumber and other products being shipped by steamboats to Brunswick and Darien, GA
- Steamboats on the Ocmulgee River made connections with Southern Railroad at Lumber City
- Once known as the "Artesian City" due to the numerous artesian wells
- Home of the historic train trestle
- 1.9 square miles of land
- Population 1,328
- 2013 Millage Rate 9.9941
- ISO Rating 6



Historic Train Trestle

City of Milan

- With the coming of Seaboard Railroad in the early 1800's, came the beginning of Milan
- Depot constructed in 1899 and was named the Milan Depot by the wife of an executive of the railroad after she returned from a visit to Europe
- Railroad transportation made it easy for farmers to shop their products to seaport cities
- At one time, Milan had three cotton gins, three sawmills and two turpentine stills
- Part of the City is located in Telfair County and part in Dodge County
- Milan is a serene and peaceful community surrounded by rich farmlands
- 3.1 square miles of land
- Population 700
- 2013 Millage Rate 6.000
- ISO Rating 4

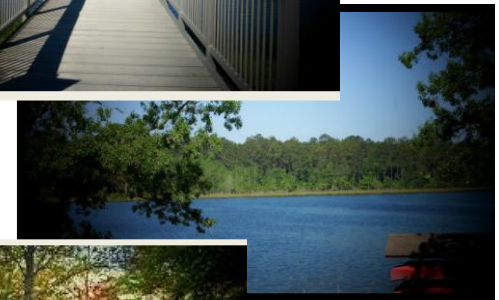


Historic Train Depot

Little Ocmulgee State Park

Live oaks, Spanish moss, sand hills, and tall southern pine trees make for a relaxing destination for families to spend an enjoyable time hiking, playing tennis, and lake activities

- ✓ Lodge
- ✓ Cabins
- ✓ Campground
- ✓ 18-hole Golf Course
- ✓ Nature Trails
- ✓ 265 Acre Lake
 - ❖ Fishing
 - ❖ Canoeing
- ✓ Playgrounds
- ✓ Splash Pad
- ✓ Group Shelters
- ✓ Picnic Areas
- ✓ Convention Center



Ocmulgee River

The Ocmulgee River runs along the southern border of Telfair County. It is located along Hwy 117 between Jacksonville, GA and Lumber City, GA.

The river is popular for sportsmen of all kind; canoeing, kayaking, fishing, camping, and bird watching.

There are four public boat ramps:

- ❖ **Lumber City Boat Landing**
Located just off Hwy 341, Lumber City, GA
- ❖ **McRae's Boat Landing**
Located off of Hwy 117 approximately three miles West of Lumber City, GA.
- ❖ **Stave's Boat Landing**
Located off Hwy 117 approximately eight miles East of Jacksonville, GA or nine miles West of Lumber City, GA.
- ❖ **Dodge's Lake Landing**
Located off of Hwy 117 approximately 12 miles West of Jacksonville, GA



City of Scotland

- Scotland chartered on August 19, 1911
- Originally named McVile after the Civil War and was populated mostly by Scottish Presbyterians
- McVile was chartered September 23, 1881 and the land was settled by land owned by Barnabus Livingston
- Gum Swamp, or as some know it, Little Ocmulgee River, follows the outer edge of Scotland where, at one time, thousands of logs were rafted down to Darian, GA.
- Was the chief cotton market of this territory
- 1.4 square miles of land
- Population 366
- 2013 Millage Rate 5.000



Quality of Education

Telfair County Public School System

The **Telfair County School System** is pursuing excellence by establishing a global learning environment for student success. The system's commitment to excellence is evident in its strong implementation of the Georgia Performance Standards (GPS), assessment for learning, frequent progress monitoring, focus on differentiated instruction and implementation of Response to Intervention (RTI) to provide maximum opportunities for student success both behaviorally and academically. Throughout the Telfair County School System, a continuum of programs and resources are in place to meet the needs of all students.

The goal of **Telfair County Pre-K** is to provide activities that help children develop healthy bodies and learn skills and concepts appropriate for their age that are necessary for maximum growth. It is also the school's goal to prepare parents and students for smooth transition into kindergarten and to see each Pre-K student graduate from high school and college in the future.

Telfair County Elementary School is committed to the continuous improvement of instruction and achievement. Students in grades K – 2 participate in the SRA Reading Mastery Program. This is a research-based reading program that explicitly teaches the thinking processes needed for decoding and comprehension. Teachers and students have access to a variety of technological resources, such as Academy of Math, Academy of Reading, ALS, Classworks, and Study Island. Telfair County Elementary School also offers students the opportunity to demonstrate their talents through activities such as band, chorus, science fair, and spelling bees.

Telfair County Middle School provides students with standards-based, assessment-driven curriculum to help them become global learners. TCMS has made significant gains on standardized test scores for the overall student population and the school continues to strive to meet the academic needs of all students. In addition to a strong academic program, Telfair County Middle Schools offers students the opportunity to participate in various extracurricular activities, including Junior Beta Club, Reading Club, Student Council, 4-H, FCA, chorus, band, basketball, softball, football, tennis, baseball, wrestling, golf, and cheerleading.

Attractions

Horse Creek Wildlife Management Area

Horse Creek Wildlife Management Area is located on Hwy 117; seven miles West of Jacksonville, GA or ten miles East of Lumber city, GA.

Hunters have access to 1000's of acres of hunting land. Primitive camping is available at designated campground.

Horse Creek WMA is also home to Montgomery Lake where Georgia W. Perry caught the World Record Largemouth Bass in 1932.

- 8,100 acres
- Hunting
- Primitive Camping
- Bird Watching
- Hiking
- Canoeing (Ocmulgee River)
- Horseback Riding Trails
- Bicycle Trails



Primitive Campground



Ocmulgee River



Trails

Quality of Cultural Activities

Cultural Activities are prevalent in Telfair. Telfair has over 100 churches, some having originated in the mid-1800s.



Telfair Center for the Arts
(Formerly Old South Georgia College)

The **Old South Georgia College**, as it is affectionately dubbed, is a cultural center that is tended by the Telfair Pioneer Historical Society.

The South Georgia College Administration Building was placed on the National Register of Historic Places in 1982

Many civic clubs have charters in the county. Parades, festivals and other outdoor events are planned annually.

As with many small towns, church activities are an important way of life. Most denominations are represented in the county.



Lumber City Baptist Church



McRae United Methodist Church



McRae United Methodist Church

Oconee Fall Line Technical College

Oconee Fall Line Technical College is a unit of the Technical College System of Georgia. This technical college is dedicated to economic and workforce development of Telfair County and the surrounding area by providing technical and continuing education, adult education, and business and industry services. They offer associate degrees, diplomas, technical certificates of credit, and non-credit certificates in a student-centered learning environment through traditional and distance education modes of delivery. A campus is located in Helena, GA as well as the main campus in nearby Dublin, GA.



Telfair County Public Library

Library Services Include:

- ✓ Children’s Programs
- ✓ Books and Periodicals for All Ages
- ✓ Reference Help
- ✓ Readers Advisory Assistance
- ✓ Public Meeting Rooms
- ✓ Genealogy Department
- ✓ Public Computer Terminals



Quality of Leisure Activities

Leisure Activities is another Telfair County favorite. The county has a full-time department of Leisure Services that coordinates recreational activities for the young and young-at-heart. Some of the events include softball, basketball, baseball, volleyball, and football. These organized sports have hundreds of participants each year.

